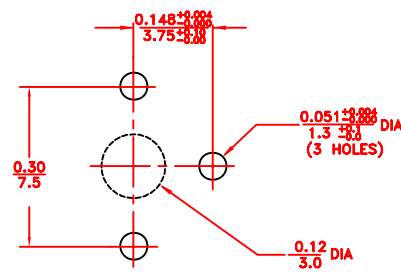
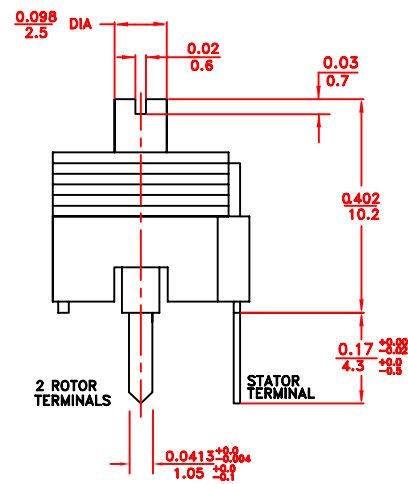
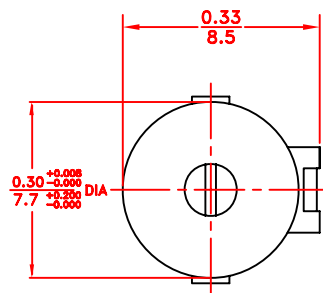


| REV | DESCRIPTION | DATE     | APP  |
|-----|-------------|----------|------|
| 00  | NEW DRAWING | 09/01/09 | S.G. |

### SPECIFICATIONS:

1. Capacitance range: 3.5 to 27.0 pF
2. Q min: 1500 at 1 MHz
3. TCC:  $0 \pm 250$  ppm/ $^{\circ}$ C
4. Operating temperature range:  $-40^{\circ}$ C to  $+ 125^{\circ}$ C
5. Construction: non magnetic
6. Working voltage: 200 VDC
7. Dielectric withstanding voltage: 300 VDC
8. Insulation resistance:  $10^4$  megohms min
9. Torque: 0.21 to 3.5 oz-in (15 to 250 g-cm )
10. Linear capacitance change vs.rotation
11. Color code: Red
12. Dielectric: PTFE



### SUGGESTED MOUNTING HOLES LAYOUT

|  |  |                      |  |  |  |   |            |
|--|--|----------------------|--|--|--|---|------------|
| TOLERANCES:<br>(EXCEPT AS NOTED)             |  |                      |  | SPRAGUE GOODMAN ELECTRONICS INC.<br>1700 SHAMES DRIVE WESTBURY, NY 11590 |  |   |            |
| DECIMAL:<br>$\pm 0.002$ in<br>$\pm 0.051$ mm |  | MATERIAL:            |  | SCALE:<br>4:1  |  | DRAWN BY: R. LEVIN<br>APPROVED: S. GRINBERG |            |
| FRACTIONAL:<br>1/64                          |  | TITLE:<br>GXE27000NM |  |  |  | USED FOR:                                   |            |
| ANGULAR:<br>1 $^{\circ}$                     |  | DATE:<br>09/01/2009  |  | DRAWING NUMBER:<br>GXE27000NM  |  |   | REV:<br>00 |