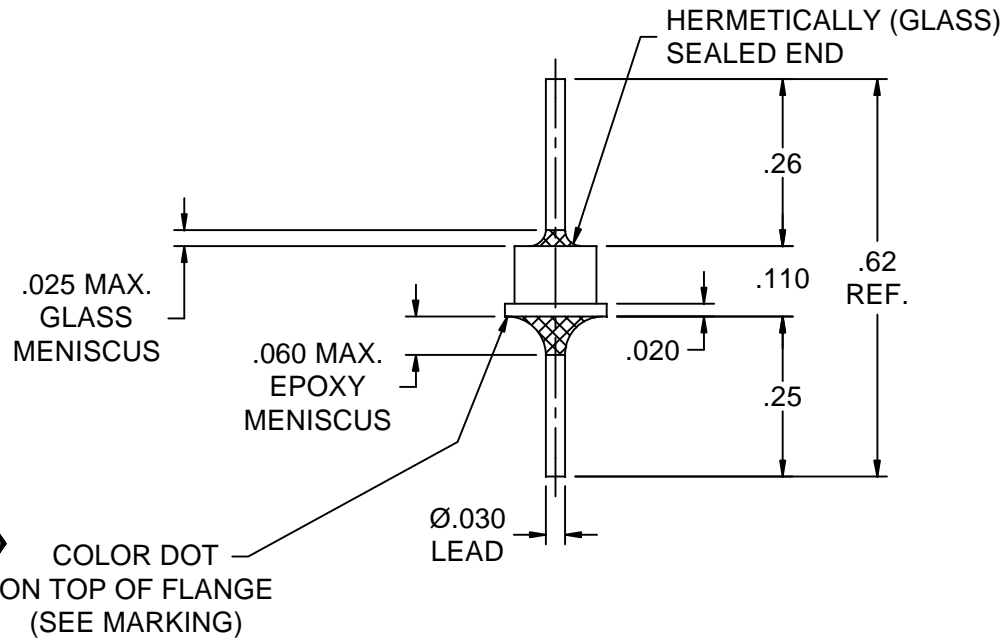
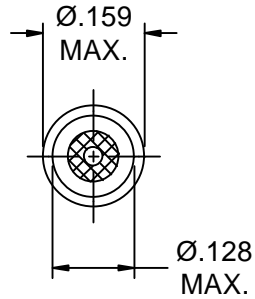


NOTES:

1. SUGGESTED MOUNTING HOLE  $\varnothing .132 \pm .002$
2. MAXIMUM SOLDERING TEMP.: 260°C FOR 20 SECONDS MAX.



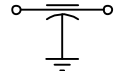
06  
COLOR DOT ON TOP OF FLANGE (SEE MARKING)

LEAD FINISH	GOLD
CASING FINISH	GOLD
CAPACITANCE	5000pF MIN.
TEMP. RANGE	-55°C to +125°C
CURRENT	5 AMPS MAX.
WORKING VOLTAGE	125°C 100 VDC MAX.
DC RESISTANCE	.01 Ohms MAX.

I.L. PER MIL-STD-220 @ 25°C (NO LOAD)

FREQ. MHz	I.L. (dB)
10	15
30	20
100	30
300	35
1 GHz	45
10 GHz	55


SCHEMATIC



MARKING:

PART : BLUE DOT  
 BAG : SCIF-9910-502  
 DATE CODE  
 QTY.



													06	05	04	03	02	01	00	REV. NO.	UNLESS OTHERWISE SPECIFIED DIMENSIONS ARE IN INCHES	TOLERANCES UNLESS OTHERWISE SPECIFIED Dec. .x ± Dec. .xx ± .03 Dec. .xxx ± .005 Angles ± 0° 30" CODE IDENT. NO. 0LSP2	 SPECTRUM CONTROL INC. Dwn. Hassett Date 10-20-09 Engr. DEVINE Sheet 1 of 1	FAIRVIEW PENNSYLVANIA Description FEED-THRU FILTER SCIF-9910-502	
													CN 51280-ENG	CN 48730-ENG	CN 47360-ENG	CN 46777-ENG	CN 43744-ENG	REDRAWN	CN 33431-CPD	CN 32261-CPD					CHANGE NOTICE

Quality Products From The Specialists In Electro-Magnetic Compatibility